

WHY BUY SSC?

- Centralized management of multiple Spectrum Protect servers
- Around-the-clock monitoring of your storage environment
- Real-time alerts for a variety of Spectrum Protect server conditions
- Granular reports that can be tailored to meet your needs
- Quick and easy tape check-ins and check-outs with operator notifications
- A more intuitive and logical approach to Spectrum Protect features such as:
  - Scheduling of client and administrative activities
  - Data retention policies
  - Management of drives and paths
  - Volume management
- Expanded search capabilities for troubleshooting

CUSTOMER TESTIMONIALS

*"...the easiest way to bring the power of IBM's TSM software to the mid market."*  
Mike Karp, Ptak

*"Now I can use non-technical staff, saves time and resources."*  
Dean W. Network Administrator

*"We don't worry about where the data is anymore..."*  
Carl W. Technology Director

*"The restores are the fastest and the easiest ever."*  
Susie V. Computer Software Engineer

*"We have reduced our backup window significantly."*  
Reave C. Backup Administrator

*"STORServer makes a personal effort to make sure [the solution] is working properly, even after the install week."*  
Todd K., Server Team Analyst

USING SSC TO MANAGE IBM SPECTRUM PROTECT SERVERS

STORServer® Console (SSC) provides centralized, around-the-clock management of your IBM Spectrum Protect™ (formerly Tivoli® Storage Manager or TSM) servers and associated storage. SSC has two main components:

- A Windows service that autonomously manages and monitors the Spectrum Protect server, performing tasks in the background and keeping you informed of the state of the server.
- An intuitive user interface (UI) designed to simplify configuration and management of your IBM Spectrum Protect server. The SSC UI provides a central, uniform "look-and-feel" for all of your IBM Spectrum Protect management needs.

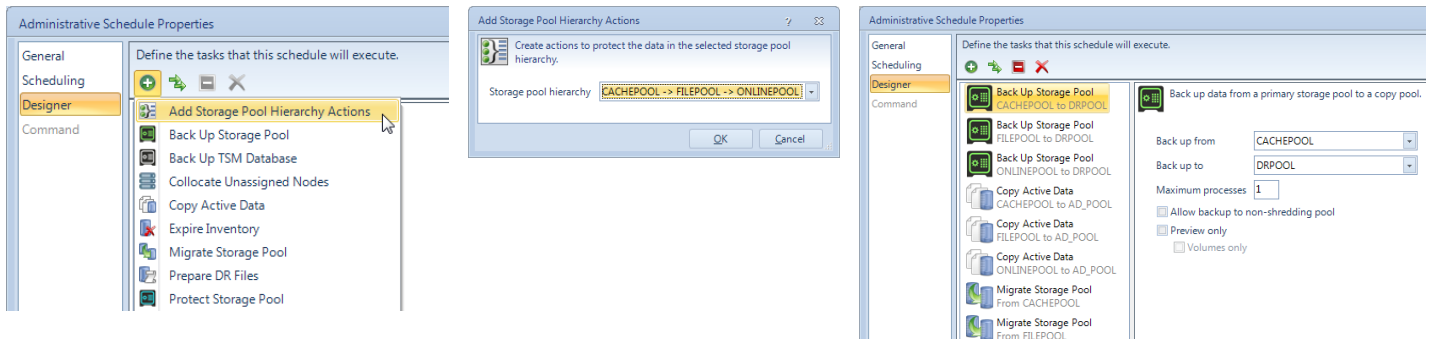
Frequently used management features are easy to find and use in the SSC UI, allowing less experienced personnel to ramp up quickly. An integrated and comprehensive Help system describes all UI features and options, and provides step-by-step instructions for performing tasks associated with the setup and management of your SSC and IBM Spectrum Protect data protection solution.

SOME KEY FEATURES

Reporting	Custom daily reports that provide everything you need to know about the state of your storage environment.
Access to the latest Spectrum Protect features	<ul style="list-style-type: none"> <li>• Cloud-container storage pools, which maximize the cost and scaling benefits of cloud storage. Deduplicated and encrypted data is written to the cloud and managed by Spectrum Protect.</li> <li>• Directory-container storage pools that reduce the cost of storage hardware and eliminate associated maintenance. Data is automatically deduplicated.</li> <li>• Node replication, which can reduce or even eliminate the costs and administration associated with DR media.</li> </ul>
Real-time monitoring	Detailed displays provide real-time status of scheduled and on-demand client and administrative activities, as well as processes and sessions on the Spectrum Protect server.
Real-time alerts and operator requests	<ul style="list-style-type: none"> <li>• Alerts notify you of hardware failures, schedule failures, and IBM Spectrum Protect server or database issues that need attention.</li> <li>• Operator requests advise when manual intervention is needed during media check-ins and check-outs.</li> </ul>
Log message viewer	Expanded search capabilities help you locate relevant data in activity and error logs.
Simplified management of drives and paths	Drives and paths can be defined during library setup or defined and modified later from multiple places in the SSC UI.

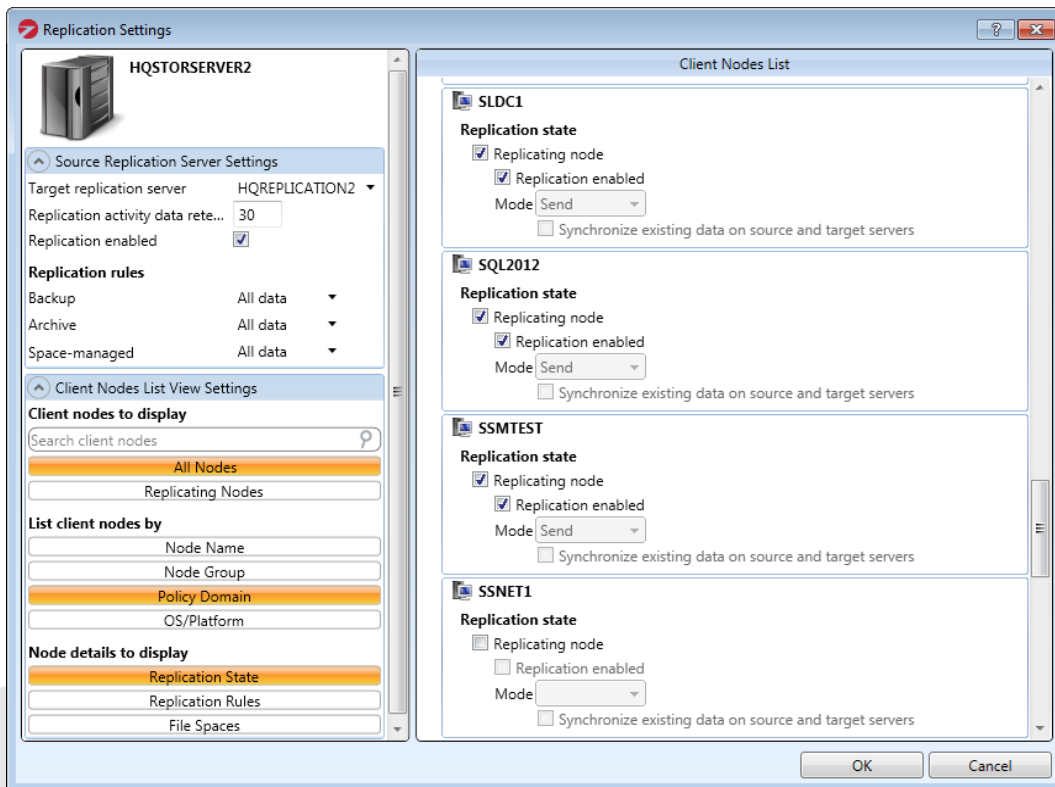
**AUTOMATING TASKS WITH SSC**

The SSC UI assists you in configuring and managing your IBM Spectrum Protect servers and automating routine tasks. For example, SSC's schedule designer can analyze your environment and add the appropriate maintenance tasks to an administrative schedule.



**SIMPLIFYING COMPLEX FUNCTIONS**

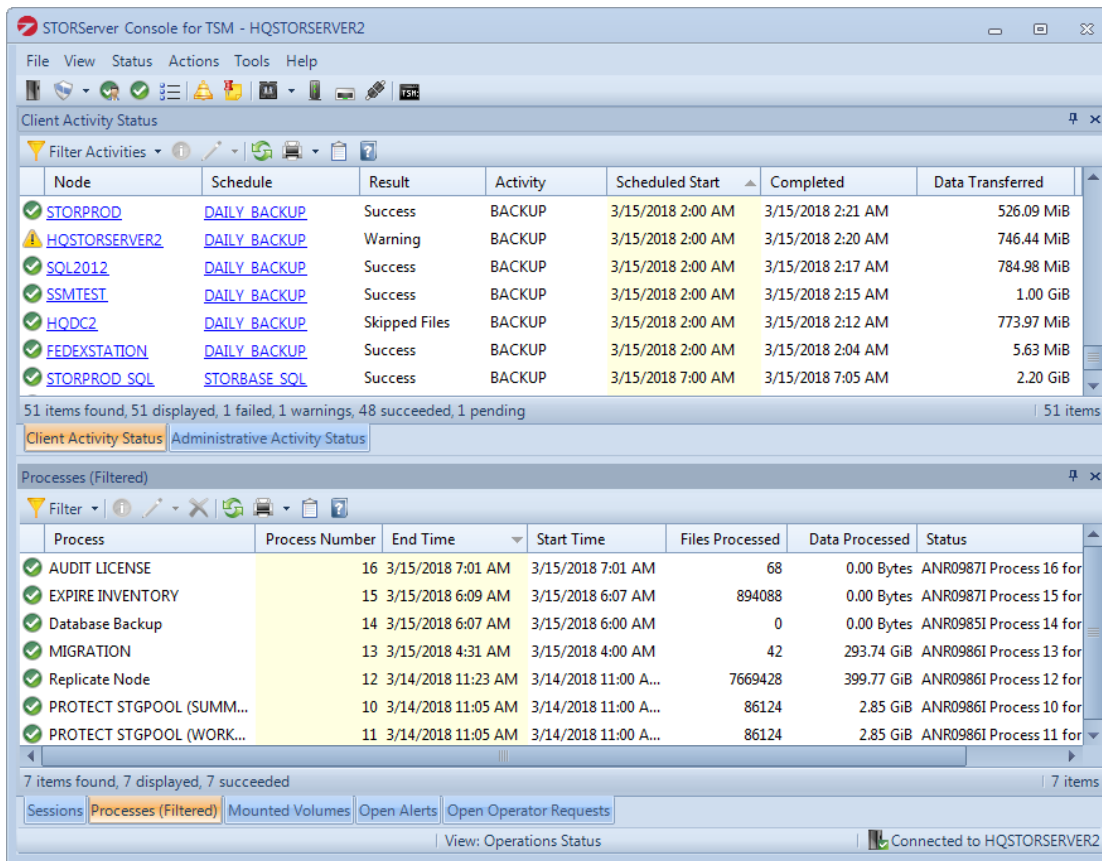
The SSC UI presents complex IBM Spectrum Protect functions in a simpler fashion. For example, SSC's Replication Settings dialog box provides a single location from which to configure or modify all settings related to node replication. Features of this dialog box let you filter the client nodes list in different ways (alphabetically by name, grouped by policy domain, matching a specified search string, and so on), and control the level of detail shown for each client node.



**CUSTOMIZING DISPLAYS TO MEET YOUR NEEDS**

The SSC UI uses a series of list windows to provide detailed information about IBM Spectrum Protect objects. For example, there is a list window for storage pools, and client nodes, and administrators, and so on. You can dock these windows in a manner that is most useful to you, and then save the arrangement as a “view” for future use. SSC provides a set of factory-defined views to get you started. These views can also be customized to suit your needs.

For example, the predefined Operations Status view provides status information on scheduled and on-demand client and administrative activities, sessions, processes, and mounted volumes. Open alerts and operator requests are also included. You can use this view each morning to check the status of your nightly backups and routine maintenance tasks.



These are just a few examples of how the SSC UI can assist you in managing IBM Spectrum Protect servers from a STORSERVER appliance or in an existing environment. The powerful combination of SSC and IBM Spectrum Protect ensures a highly disaster-tolerant environment for your corporate data.

**ABOUT STORSERVER**

STORSERVER is a leading provider of data protection solutions and offers the only enterprise data backup appliance that is built to order. Each backup appliance solution is tailored to the customer’s unique environment to simplify management of complex backup, archive and disaster recovery needs. STORSERVER’s appliances feature enterprise class data backup, archive and disaster recovery software, hardware, services and U.S.-based customer support. For more information on STORSERVER, please visit our website.